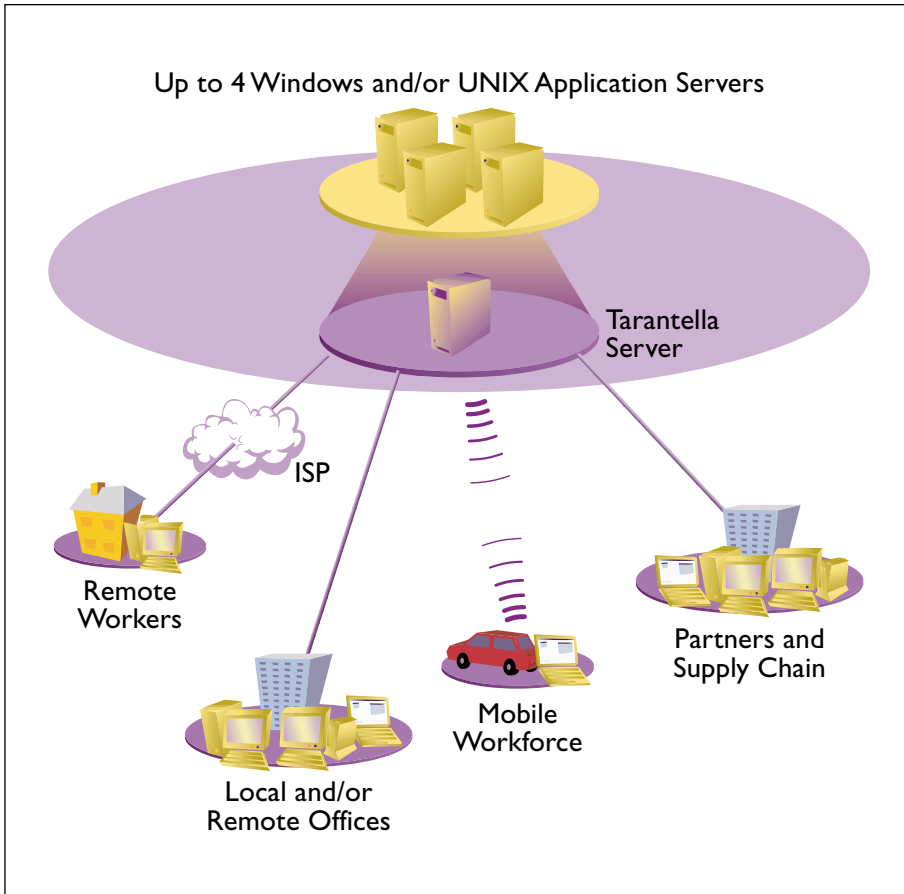


Tarantella[®] Express[™]



Tarantella[®] Express[™] is a powerful web-enabling solution, and is easy to install and administer.

Specially designed for use in workgroup and department environments, Tarantella Express gives users web-based access to applications.



One World, One Network, One Answer



Extend the reach of your applications over intranets and the Internet

Tarantella® Express™ web-enabling software is a fast, simple and cost-effective way to make your applications available over your network or the Internet.

With Tarantella Express you can make your applications available to users, wherever they are. As long as they have a web-browser on their client device, you simply provide them with a url, and this gives them full access to specified applications and resources hosted on your servers.

At no time do you lose control of who can access what, and how an application is used and configured. The Tarantella Control Center gives your administrator centralized control over application access, so you can instantly make applications available to specified users and groups of users; update applications ready for use by everyone the next time they log in; and ensure stable and consistent application set-up.

Tarantella Express can be your first step towards opening up your company to the world of e-business. It provides a central, unifying element in a web-enabling solution, and even allows you to make your applications available to people outside your own company, department or organization.

With Tarantella Express on your network you can now give mobile staff, remote offices, customers, suppliers and more, access to any of your applications, and begin to reap the benefits of the wired world.

Tarantella Express runs on SCO OpenServer, and UnixWare and will provide up to 45 concurrent users, inside or outside your organization, with web-based access to your server-based Windows or UNIX applications.

If at a later date, you wish to provide access to other types of applications, or to more than 45 concurrent users, or want to set up an array of Tarantella servers, there is a simple upgrade path available with Tarantella Enterprise II, the enterprise-class web-enabling software.

NEW! Wizards simplify administration routines

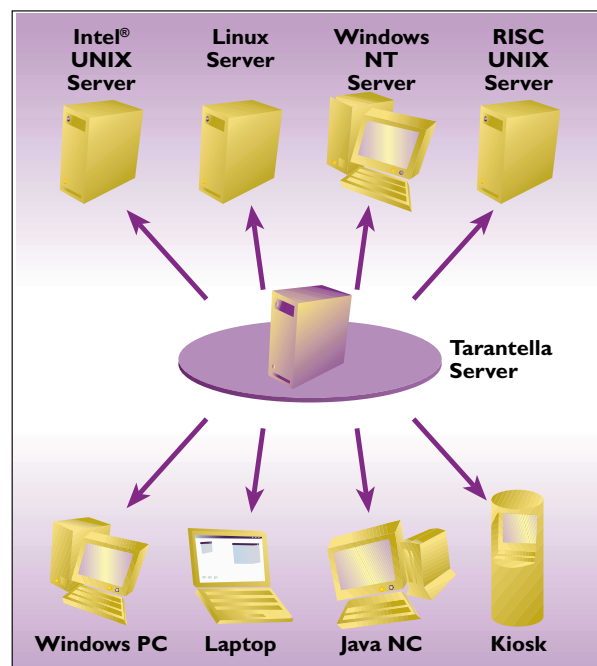
The particular needs of administrators in smaller companies and departments are addressed by two wizards which are included as standard with Tarantella Express. These wizards help to make the installation of Tarantella Express, and ongoing administration, deployment and access management, as fast and simple as possible.

Platform Wizard

The Platform Wizard helps to speed up administration routines for Tarantella Express. It runs automatically during the installation of Tarantella Express. This wizard provides a simple-to-use method to take advantage of features specific to particular operating systems. It automatically creates application objects (icons) to represent available tools such as SCOMail, OpenServer Desktop, SCOedit, and SCO Administration Tools.

Application Wizard

The Application Wizard also runs automatically during installation of Tarantella Express, and can afterwards be called up at any time by the Tarantella administrator. This wizard creates Windows application objects (icons) to represent standard applications such as, for example, NotePad, Word, Excel and PowerPoint when Microsoft Office is installed on one of the application servers.



Windows and UNIX applications on up to 4 application servers can be web-enabled with Tarantella Express software.

Fully customizable webtop

Tarantella Express is key to developing an intranet/extranet strategy. The user interface, or webtop, can be customized to provide access to many different resources, for example, financial and resources planning applications, computer-based training and personnel resources.

The webtop can also be tailored to have a look-and-feel that reflects your corporate style.

A web site, the Tarantella Solution Zone, provides a library of solution building blocks to help you more quickly and easily build corporate portals and customized webtop interfaces.

Visit: <http://tarantella.sco.com/tsz> to see examples of the many ways the webtop can be customized to suit your needs.

Centralized management for instant deployment of applications

With Tarantella on your network, you can publish any application to any of your users, wherever they are. Your administrator centrally manages them all with the same tool – the Tarantella Control Center:

To publish an application, the administrator first creates a model of your company or department, organized into groups according to job function, project teams, etc. The administrator then creates an icon for each application. By simply dragging and dropping the icons onto the appropriate group of users, the applications are made instantly available to all the people in that group, through their webtops.

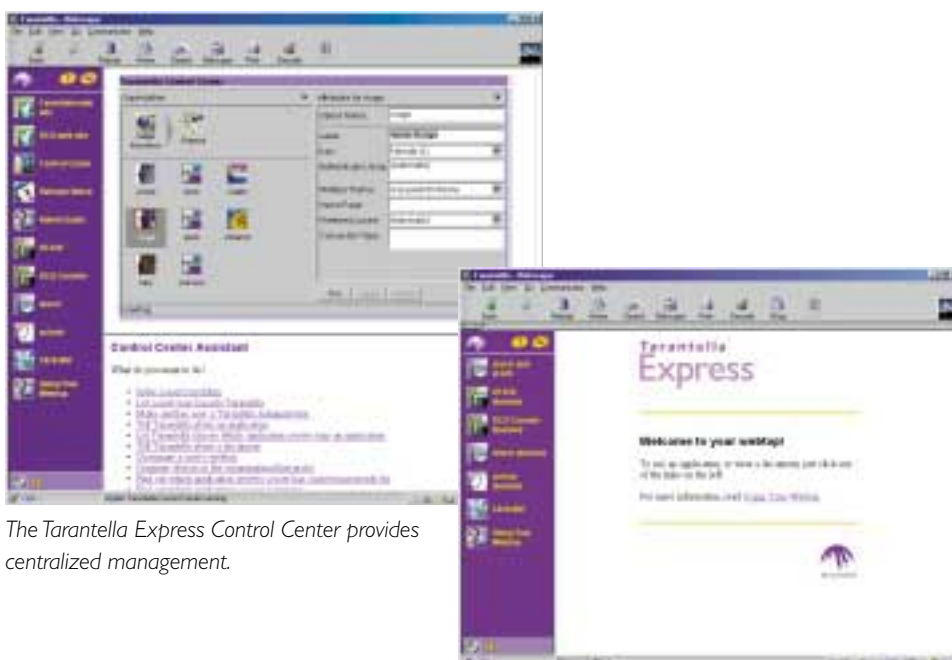
Whenever a user logs into Tarantella, the webtop – a dynamically created web page that's unique to each user – appears within the web browser. This webtop contains icons representing the applications available to the user. Clicking on these icons launches the applications.

Control Center is used to:

- Publish applications and documents to users
- Specify the applications each user is allowed to access
- Manage single point of login to multiple application servers
- Monitor and control user sessions
- Configure Tarantella server settings.

Control Center:

- Cuts administration time by grouping together users who have the same application requirements
- Gives new group members access to all their groups' applications
- Allows users' webtops to be updated automatically if they move to a different part of an organization.



The Tarantella Express Control Center provides centralized management.

The webtop provides a single access point for many corporate resources.

AIP – the only network protocol that constantly adapts

At the heart of Tarantella is AIP – the Adaptive Internet Protocol. This protocol delivers an application's display to the client at optimal performance levels, whatever the network connection.

By having an adaptive protocol, Tarantella automatically changes to suit the characteristics of the client and the network connection. This solves the problem of managing different client devices and network connections and supporting several different display protocols.

AIP continues to monitor network performance after a connection has been made. Tarantella reacts to changes in conditions such as network load, to provide continuous optimal performance.

AIP also uses variable data compression as needed, and analyzes the graphics queue. By doing this it further reduces the amount of data sent, and so enhances network performance.

Improved performance

Tarantella minimizes the amount of graphical information sent to the desktop, to deliver record-breaking performance.

Tarantella contains Protocol Engines and Display Engines for each application type and the bulk of the emulation processing is carried out by the Protocol Engine on the server.

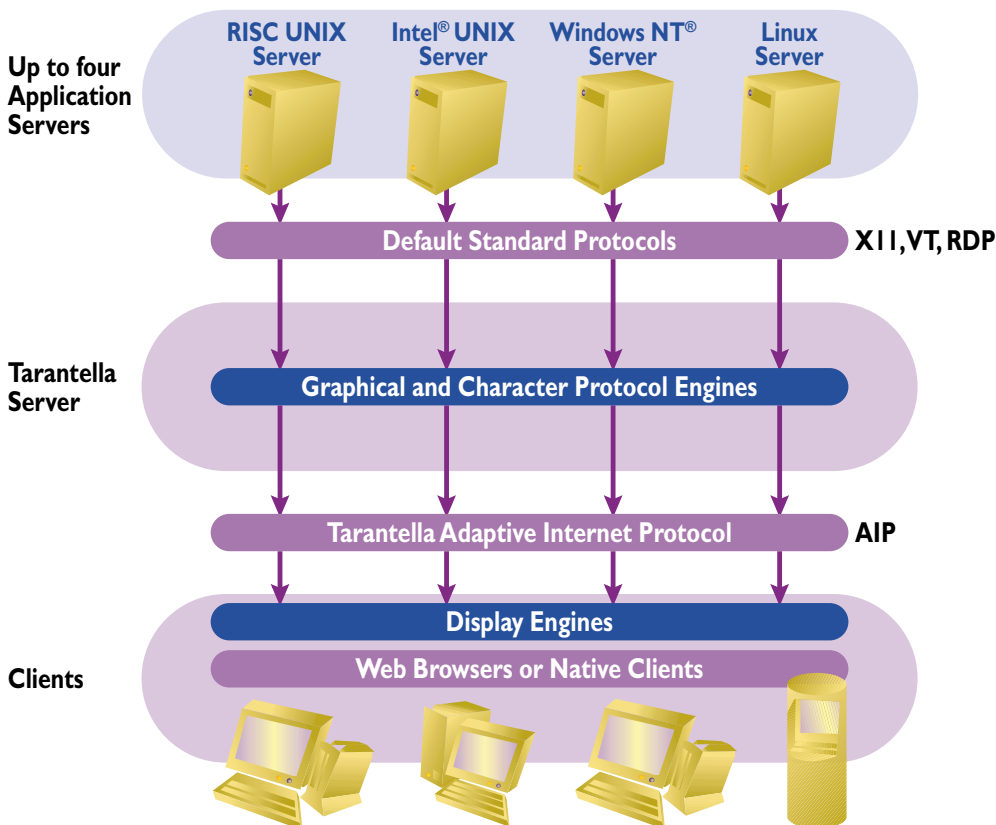
The Protocol Engines are implemented as native binaries to ensure optimal performance on the server. They translate the application's protocol requests into AIP that the Display Engines understand. Because only optimized display information is sent to the client device, the bandwidth requirement for running an application is significantly reduced and overall network performance is increased.

The Display Engines are Java applets that are downloaded to the user's web browser on demand. These Display Engines render the application and relay mouse and keyboard input to the application.

Simplified access to application servers

Tarantella Express software can reside on a middle-tier, between the client devices and the application servers. User accounts and passwords between the clients and servers can be managed from this central position.*

The main benefits of this central management are that important server account information is shielded by Tarantella, and users can be provided with a single, simple and secure account.

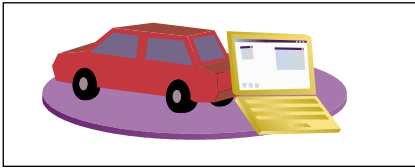


Tarantella Express – under the hood.

For further information on how Tarantella works, see the white papers at <http://tarantella.sco.com>

* Alternatively, Tarantella Express software can be installed on an application server.

Remote access empowers mobile users

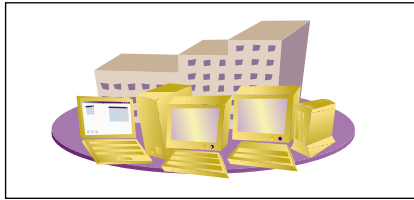


With access to corporate information and applications at breakthrough speeds, mobile users need never again feel isolated from the office. All the information available to users attached to the corporate LAN is also available to them.

Email, fax, the sales database, even mission-critical applications such as the stock inventory system can be made available, without the need to install any application software on the client devices.

If a modem connection drops, the mobile users can rest assured that the unique Tarantella session resume facility will return them to the exact point at which they were cut off, and the session will keep running. So they can do extended calculations while on the road, without worrying about losing data.

Global reach connects partners and suppliers



With Tarantella, authorized partners and suppliers can access corporate data over the web. Imagine how this could speed up operations and give you that important competitive edge.

With Tarantella you don't have to dictate to your partners the type of client they must use. You don't need to install extra software on your partners' client devices. You simply provide them with a web address so they can securely access your corporate data over their normal Internet or extranet connection.

Follow-me printing

Your mobile users Your mobile users will enjoy local printing that just works!

As soon as a user logs in, Tarantella discovers the local default printer, and sends all print output from any application to that printer:

For example, a sales representative visiting a customer would use her own laptop to retrieve information from the central stock inventory application, and could then place an order with the supplier. To close the deal, a printed report and order are necessary. With follow-me printing, the print request can be redirected to the supplier's printer, and the deal closed immediately.

Optional security pack

Security is always a concern when accessing information over the Internet. It is essential that no-one can snoop on the wire and that unauthorized users cannot get into corporate systems.

Tarantella software supports Secure Sockets Layer (SSL) v3 protocol and RSA cryptographic services, so data is reliably encrypted before it is sent over a standard public-access Internet connection. This ensures that only authenticated users can access corporate data.

As part of its SSL support, Tarantella inter-operates with Server Certificates, including X.509 certificates, to ensure users connect only to valid Tarantella servers.



The webtop can be customized to provide a look and feel that reflects your corporate style.



Tarantella Express Specifications

Tarantella server architecture	<ul style="list-style-type: none"> • Applications: <ul style="list-style-type: none"> • Supports Windows and UNIX applications • Directly supports RDP, X11, Wyse 60, VT52-420 • Supports Microsoft® Windows NT® Server 4.0, Terminal Server Edition, Windows 2000 Server and Windows 2000 Advanced Server • Stores state information centrally about users and their associated applications • Provides a device-neutral webtop for users to access their applications • Session Manager manages users' live sessions • Supports OpenGL and double buffering • Supports the Euro currency symbol • APIs available for customizing webtop look-and-feel and interaction with applications • Single login across servers • Runs on SCO OpenServer 5.0.4+, SCO UnixWare 2.1.2+ and UnixWare 7+
Performance	<ul style="list-style-type: none"> • Delivers applications at breakthrough speeds over LAN, WAN and dial-up • Intelligently caches archived Java classes on the client • Adaptive Internet Protocol: <ul style="list-style-type: none"> • Measures the network for latency, bandwidth and load • Automatically optimizes for all network connections • Balances compression rates depending on network bandwidth and client device capacity • Performs color management, server-managed client caching and "just full" transmission management
Management tool (Control Center)	<ul style="list-style-type: none"> • Provides centralized management of all application types • Publishes applications to users using a drag-and-drop action • Manages application server passwords • Views which users are logged on and what applications are running • Configures authentication mechanisms • Management can be carried out using command line tools
Session Resume	<ul style="list-style-type: none"> • Applications keep running when client device or network connection fails • Administrators can configure applications to be resumable on a per-application basis • Live application sessions can be moved from one client to another
Follow-me printing	<ul style="list-style-type: none"> • Print job routed to default printer • Automatically re-routes print job to a local printer when user logs in from different location
Tarantella Solution Zone	<ul style="list-style-type: none"> • Provides sample code for replacing the standard Tarantella webtop with a purpose-built user interface • Provides building blocks for solution providers to develop customized corporate information portals • Shows customization examples and how to create them • Visit the web site at http://tarantella.sco.com/tsz/ for customization examples
Optional security	<ul style="list-style-type: none"> • Supports SSL v3 protocol • Uses cryptographic libraries licensed from RSA Data Security Inc. • Uses X.509 certificates • Supports Test Certificates and supplementary Certificate Authorities
Server requirements	<ul style="list-style-type: none"> • The Tarantella server must have a web server installed and running • Tarantella requires 40Mb disk space and 32Mb RAM to be initiated • We recommend 4Mb of RAM per user on the server
Clients	<ul style="list-style-type: none"> • The client device must support TCP/IP • Users access applications either through a Java web browser: Netscape Navigator®, Microsoft® Internet Explorer; or through a native Windows client for 486 Pentium® PCs running Windows 3.11, Windows 95, Windows 98 or Windows NT • Browsers must include JVM, and must support HTML 3.2 and Frames • For an up-to-date list of supported browsers see http://tarantella.sco.com/sysreqs

Corporate Headquarters & US

Regional Sales Office

SCO, 425 Encinal Street, Santa Cruz,
California, 95061-1900, United States of America
Tel: +1 831 425 7222 Fax: +1 831 458 4227
Sales and Information: Tel: (800) SCO-UNIX (726-8649)

Canada, Latin America & Australia

Regional Sales Office

SCO, 425 Encinal Street, Santa Cruz, California,
95061-1900, United States of America
Tel: +1 831 427 7811 Fax: +1 831 427 5418

Europe, Middle East, India and Africa

Regional Sales Office

SCO United Kingdom, Croxley Business Park,
Hatters Lane, Watford WD1 8YN United Kingdom
Tel: +44 (0)1923 816344 Fax: +44 (0)1923 813808

Asia Pacific

Regional Sales Office

SCO Singapore, 171 Chin Swee Road,
#03-05 San Centre, Singapore 169877
Tel: +65 536 6606 Fax: +65 536 6619



9 3 0 - 0 L 0 - 0 1 9 A

E-mail: info@sco.com <http://www.sco.com> <http://tarantella.sco.com>